

# For Lease

**2,377 SF**  
Office Space



## Abele Business Park | Suite 1204/1205B

70 Abele Road, Bridgeville, PA 15017

### Property Features

Abele Business Park offers a variety of flexible workspace solutions within a welcoming campus setting encompassing over 300,000 square feet of office and flex products.

- Dedicated Client Experience Team
- Exclusive Access to Partner Perks Program
- Walking Trail w/ Exercise Stations
- iBench for outdoor meetings
- Food Trucks in Park Weekly
- Walkability to Retail
- 24 Hour Maintenance
- Free Parking
- Direct Interchange access off I-79 Technology Corridor
- 15 Minutes from downtown PGH and PGH Int'l Airport
- Welcoming Campus Setting



**Nick Scalo**

+1 412 721 7300 • [nscalo@burnsscalo.com](mailto:nscalo@burnsscalo.com)

**Joe Sheerer**

+1 412 925 8356 • [jsheerer@burnsscalo.com](mailto:jsheerer@burnsscalo.com)

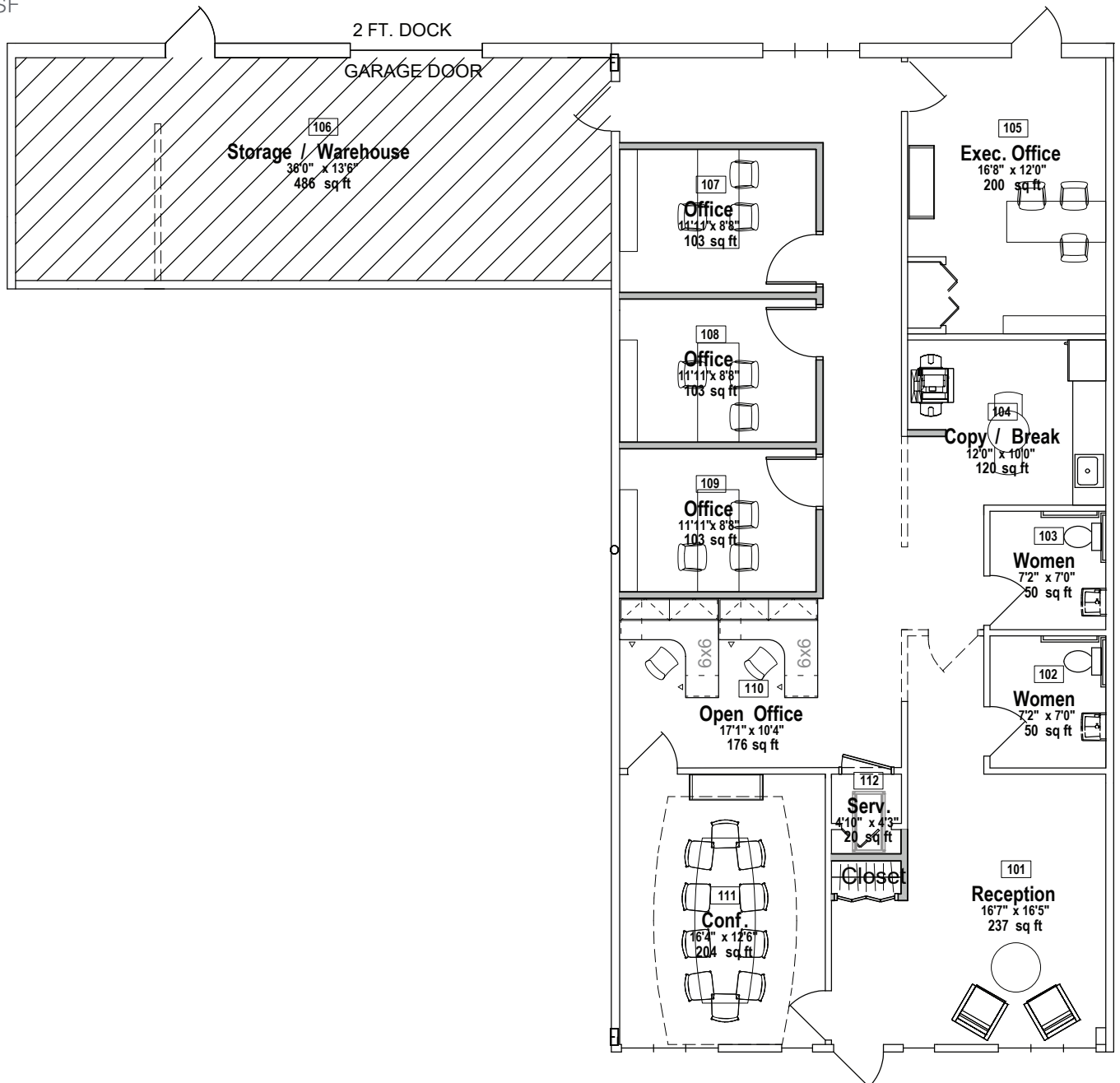
**NAI Burns Scalo**  
COMMERCIAL REAL ESTATE SERVICES, WORLDWIDE

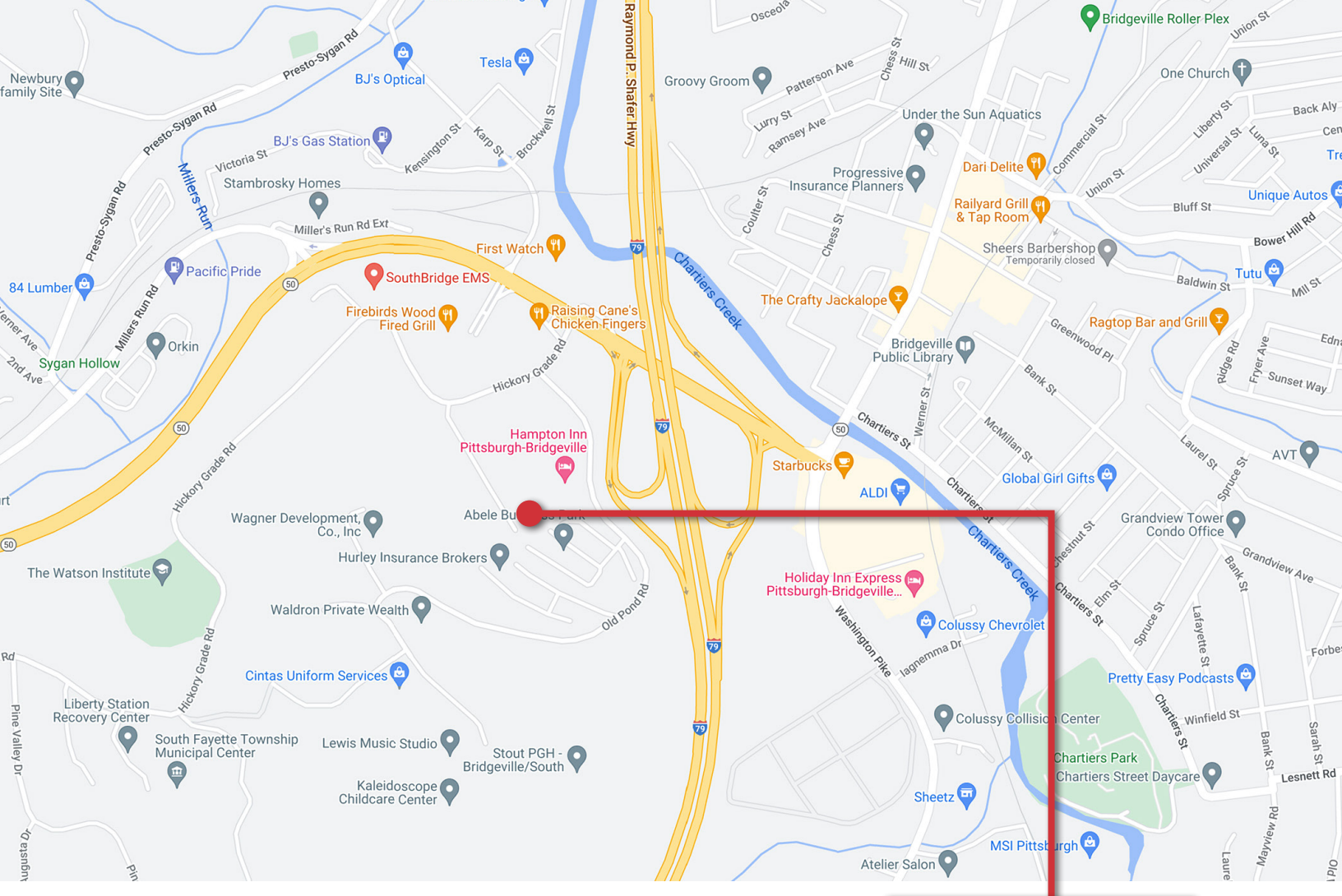




## Suite 1204/1205B Floor Plan

- 2,377 SF





**Abele  
Business  
Park**

## Nearby Amenities



+ More!

**NAI Burns Scalo**

COMMERCIAL REAL ESTATE SERVICES, WORLDWIDE

**Nick Scalo**

+1 412 721 7300 • [nscalo@burnsscalo.com](mailto:nscalo@burnsscalo.com)

**Joe Sheerer**

+1 412 925 8356 • [jsheerer@burnsscalo.com](mailto:jsheerer@burnsscalo.com)